

KATIE LEE AND WILLIE GRAY.

J. H. PIXLEY.

The piano introduction consists of two staves. The right hand features a series of triplet eighth notes in a G major key signature, while the left hand provides a simple harmonic accompaniment of quarter notes.

1. Two brown heads with toss - ing curls,
2. They were standing where a brook,
3. They had cheeks like cher - ries red;
4. "Pret - ty Ka - tie," Wil - lie said -
5. Ka - tie an - swered, with a laugh,

The piano accompaniment for the first verse continues with triplet eighth notes in the right hand and a steady quarter-note accompaniment in the left hand.

Red lips shutting o - ver pearls,
Bend - ing like a shep - herd's crook,
He was tall er - most a head;
And there came a dash of red
"You shall car - ry on - ly half;"

Bare feet white and wet with dew,
Flashed its sil - ver, and thick ranks
She, with arms like wreaths of snow,
Through the brownness of his cheek -
And then, toss - ing back her curls,

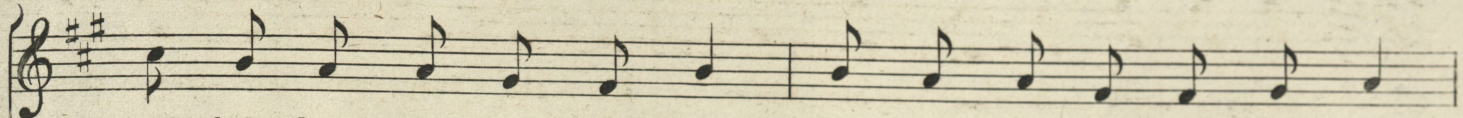
The piano accompaniment for the second verse features a more active right hand with eighth notes and a left hand with a simple harmonic accompaniment.

Two eyes black and two eyes blue; Lit - tle boy and girl were they,
 Of green wil - low fringed the banks; Half in thought and half in play,
 Swung a bas - ket to and fro, As she loitered, half in play,
 "Boys are strong and girls are weak," And I'll car - ry, so I will,
 "Boys are weak as well as girls." Do you think that Ka - tie guessd,

Katie Lee and Willie Gray.
 Ka - tie Lee and Willie Gray.
 Chattering to Willie Gray.
 Katie's bas - ket up the hill."
 Half the wisdom she expressed?

8va

6. Men are on - ly boys grown tall, Hearts don't change much af - ter all;
 7. Is it strange that Wil - lie said - While a - gain a dash of red,
 8. "Will you trust me, Ka - tie dear? Walk be - side me with - out fear;
 9. Close be - side the lit - tle brook, Bend - ing like a shepherd's crook,
 10. In a porch she sits and lo! Swings a bas - ket to and fro,



And when, long years from that day, Ka - tie Lee and Wil - lie Gray,
 Crossed the brown - ness of his cheek - "I am strong and you are weak;
 May I car - ry if I will, All your bur - dens up the hill!"
 Wash - ing with its sil - ver hands, Late and ear - ly at the sand,
 Vast - ly different from the one That she swung in years a - gone;



Stood a - gain be - side the brook, Bending like a shepherd's crook.
 Life is but a slippery steep, Hung with sha - dows cold and deep;
 And she an - swered with a laugh, "No, but you may car - ry half."
 Is a cot - tage, where, to day, Ka - tie lives with Wil - lie Gray.
 This is long, and deep, and wide, And has - rockers at the side!

